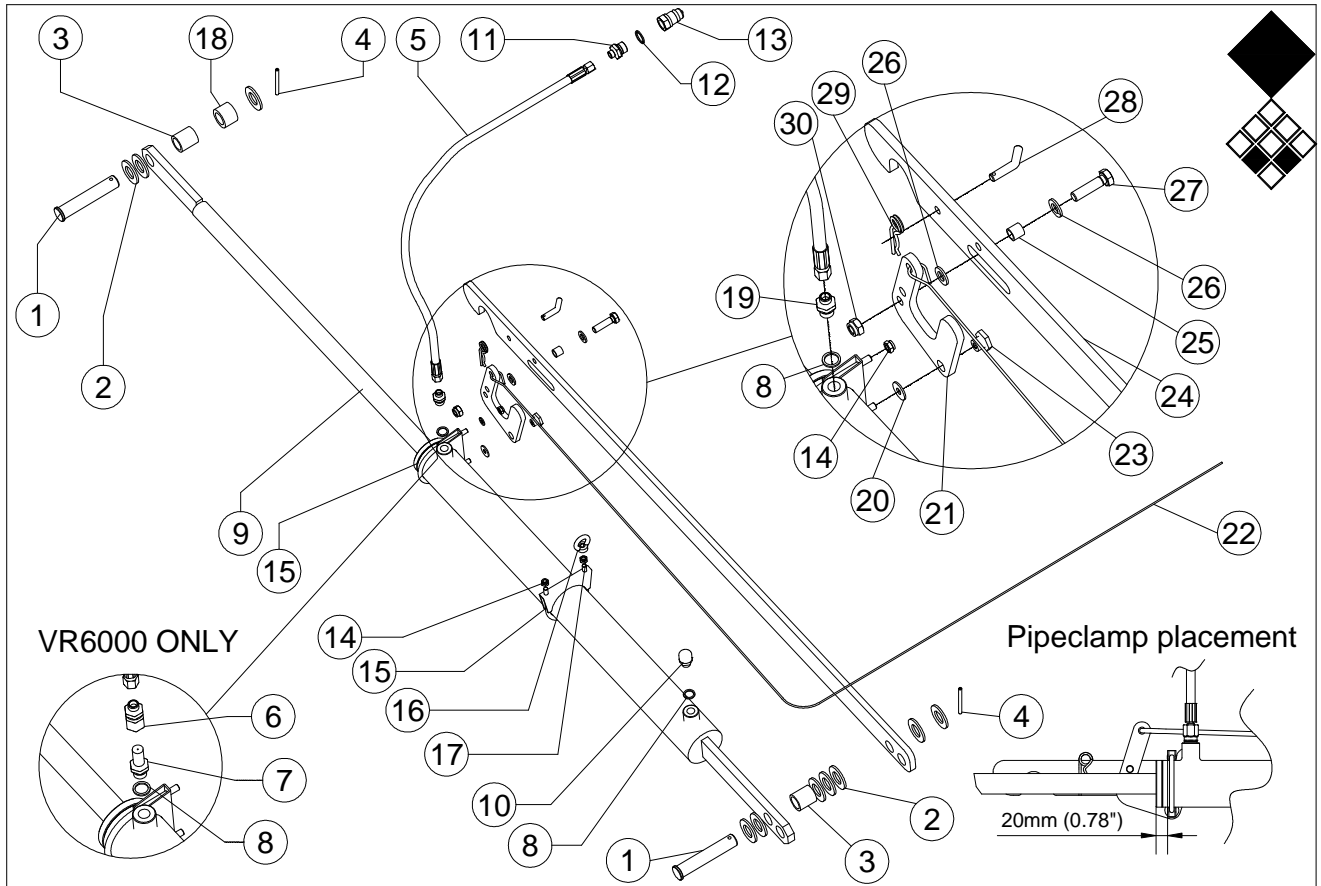


Redexim-Charterhouse Verti-Rake 4500 / 6000 Rake section pag 03 code 0831

	PART 4500 / 6000	DESCRIPTION	DESCRIPTION	QUA
1	361.505.390	Tine for Verti-Rake		60
2	404.100.160	Pivot bush		6
3	424.100.590	Lock pin		1
4	464.069.110	Guide strip for angle setting		2
5	482.081.360	Chain		2
6	494.127.091	Rake frame		1
7	494.128.105	Tine support tube 1		1
8	494.128.106	Tine support tube 2		1
9	494.128.107	Tine support tube 3		1
10	494.128.108	Tine support tube 4		1
11	494.128.109	Tine support tube 5		1
12	494.128.270	Tine carrier		1
13	523.030.750	R-Clip		1
14	802.100.400	Bolt M10 x 40		6
15	802.160.900	Bolt M16 x 90		2
16	804.100.200	Bolt M10 x 20		2
17	802.100.650	Bolt M10 x 65		60
18	822.100.360	Eye nut M10		2
19	830.100.100	Self lock nut M10		66
20	830.160.160	Self lock nut M16		2
21	846.100.471	D-Shackle		4
22	864.100.031	Large washer M10		60
23	899.080.150	Rope for spring tines		6
		The 4.5 meter Rake has 3x1.5m sections, so multiply the quantities mentioned above with 3.		
		The 6 meter Rake has 4x1.5m sections, so multiply the quantities mentioned above with 4.		



Redexim-Charterhouse Verti-Rake 4500 / 6000 pag 07 code 1016

	PART #	DESCRIPTION	REMARKS	QUA
1	418.251.350	Pin	Only VR6000	002
	418.252.000	Pin	Only VR4500	002
2	864.260.030	Washer M26		012
3	406.260.380	Distance Bush		002
4	878.080.500	Roll pin Ø8x50		002
5	541.151.600	Hydraulic Hose		001
6	544.121.120	Nipple M18 – 12mm Pipe	Only VR6000	001
7	543.170.410	Oil Flow Reducer	Only VR6000	001
8	874.170.020	Cupper Washer G3/8"		002
9	534.303.750	Cylinder VR		001
10	537.380.360	Breather G3/8"		001
11	544.130.402	Nipple G1/2" – M18		001
12	874.210.020	Cupper Washer G1/2		001
13	545.210.800	Quick Connector Male G1/2"		001
14	830.080.080	Self Lock Nut M8		002
15	547.081.140	Pipe Clamp Ø83		002
16	822.080.360	Eye Nut M8		001
17	826.080.080	Nut M8		001
18	406.260.290	Distance Bush Ø40/Ø26 L=29		001
19	544.170.120	Nipple G3/8" - M18 12mm pipe	Only VR4500	001
20	864.080.031	Large Washer M8		001
21	464.101.350	Lock Lever		001
22	899.040.250	Nylon Cord L=2500		001
23	408.080.160	Threaded Hex. Bush		001
24	464.129.151	Lock Strip		001
25	406.120.152	Distance Bush		001
26	864.120.030	Washer M12		002
27	804.120.450	Bolt M12x45		001
28	424.100.590	Lock Pin		001
29	523.030.750	R-Clip D=4		001
30	830.120.120	Self Lock Nut M12		001
	764.350.700	Seal Kit For Cylinder Verti-Rake		001

